

## EXISTING PARK FEATURES

- 5-12 PLAYGROUND
- 1/2 COURT BASKETBALL
- NEIGHBORHOOD BALL FIELD
- PAVED TRAIL IN ACTIVE PORTION OF THE PARK
- SLEDDING HILL
- NATURAL AREA CONSISTING OF WOODS AND GRASSLANDS

## FUTURE POSSIBILITIES

### AMENITIES

- NEW PLAY EQUIPMENT FOR 5-12 YEAR OLD AND 2-5 YEAR OLD WITHIN EXISTING PLAYGROUND
- PICNIC SHELTER
- SECURITY LIGHT BETWEEN NEW PARK SHELTER AND PLAYGROUND
- IMPROVED HALF COURT BASKETBALL
- NEIGHBORHOOD BALL FIELD TO REMAIN

- ADDITIONAL BENCHES AND TRASH RECEPTACLES
- NEW PARK SIGNAGE AT TRAIL ENTRIES

### PEDESTRIAN CIRCULATION AND SAFETY

- PAVED TRAIL CONNECTION TO UPPER 183RD ST. WEST
- PAVED TRAIL LINKING EUCLID ST. TO PARK AMENITIES MEANDERS UP HILLSIDE THROUGH THE PARK'S NATURAL AREAS
- SIDEWALK ALONG EUCLID ST. NORTH TO UPPER 182ND AND SOUTH TO CONNECT TO EXISTING TRAIL AT EUCLID PATH AND PILOT KNOB RD.
- CONSIDER STOP SIGNS :
  - THREE WAY STOP SIGN AT ESQUIRE WAY AND ESSENCE TRAIL
  - THREE WAY STOP AT EUCLID ST. AND UPPER 182ND ST.
  - ON EUCLID WAY AT EUCLID ST. INTERSECTION
  - ON UPPER 183RD ST. W. AT EUCLID ST.

- BOLLARDS ON ALL TRAILS AT STREET INTERSECTIONS TO SLOW BICYCLISTS
- GATE ON PARK ROAD AT ESQUIRE WAY TO CONTROL VEHICULAR ACCESS

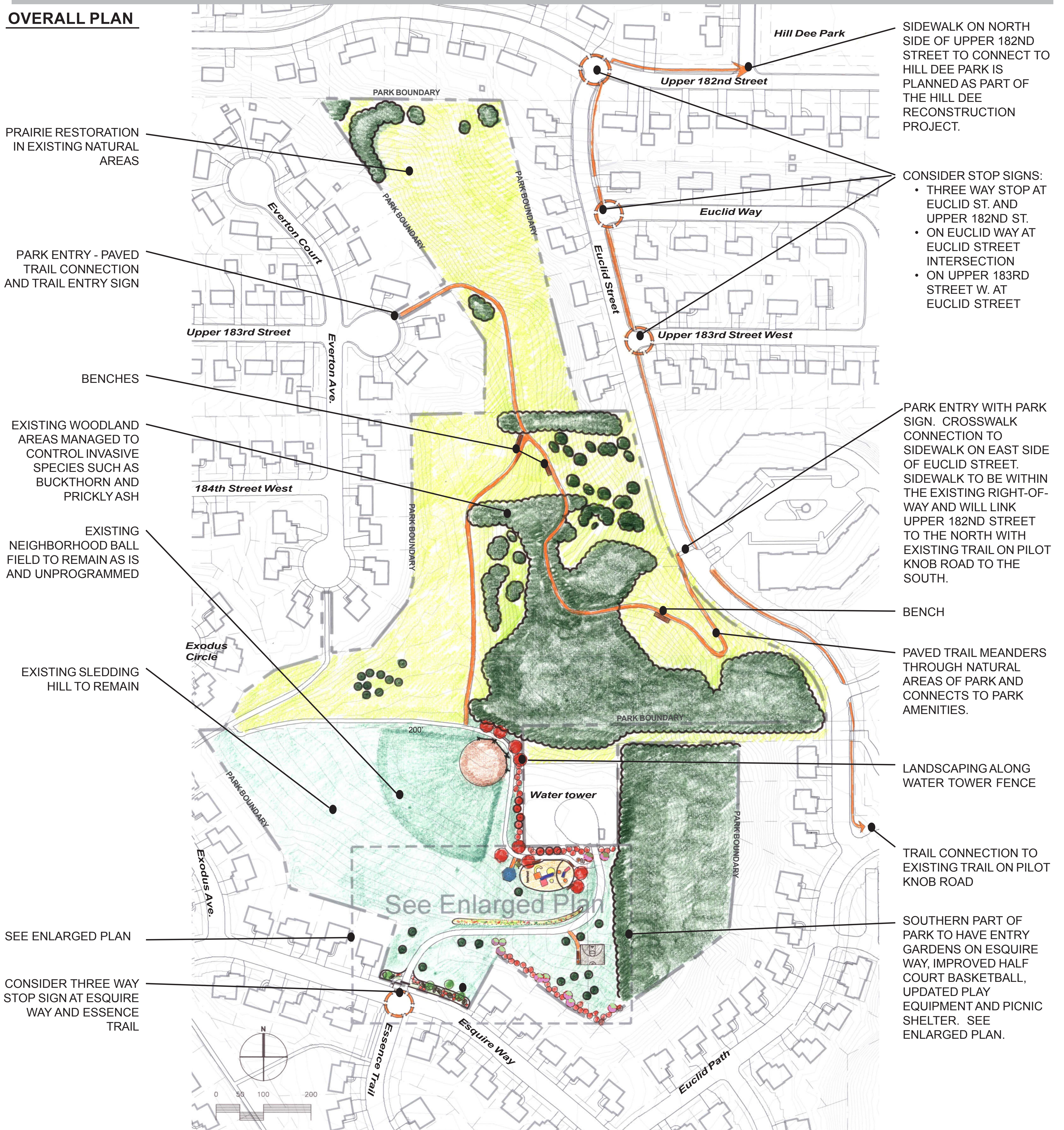
### LANDSCAPING AND NATURAL AREAS

- ENTRY GARDEN WITH PERENNIALS, SHRUBS AND LANDSCAPE BOULDERS AT ESQUIRE WAY
- LANDSCAPING ALONG WATER TOWER FENCE
- ADDITIONAL SHADE TREES, ORNAMENTAL TREES AND SHRUBS IN KEY LOCATIONS
- TRIAL PRAIRIE GARDEN ON STEEP DRAINAGE SWALE SLOPES NORTH OF WATER TOWER ACCESS ROAD
- PRAIRIE RESTORATION AND WOODLAND MANAGEMENT IN EXISTING NATURAL AREAS

SEE SECOND PAGE FOR ENLARGED PLAN FOR SOUTH PORTION OF PARK AND PLAN KEY

PARK SIZE: 25 ACRES

## OVERALL PLAN



KEY					
	EXISTING SHADE TREE		PROPOSED SHRUBS		PROPOSED TRAILS AND SIDEWALKS
	EXISTING EVERGREEN TREE		TURF		EXISTING TRAIL
	PROPOSED EVERGREEN TREE		PRAIRIE		WASTE CONTAINER
	PROPOSED SHADE TREE		WOODS		BIKE RACK
	PROPOSED ORNAMENTAL TREE		PROPOSED TRIAL PRAIRIE GARDEN		BENCH
					PARK BOUNDARY

## ENLARGED PLAN



The master plan suggests adding a park shelter, similar to this one, located in Hill Dee Park, for shade, picnicking, and park programs such as "Pooh's Playground."



Small park signs will be installed at all trail entrances to the park.



The master plan suggests updating the park's play equipment. A recently installed playground at Meadow View Park is shown above.